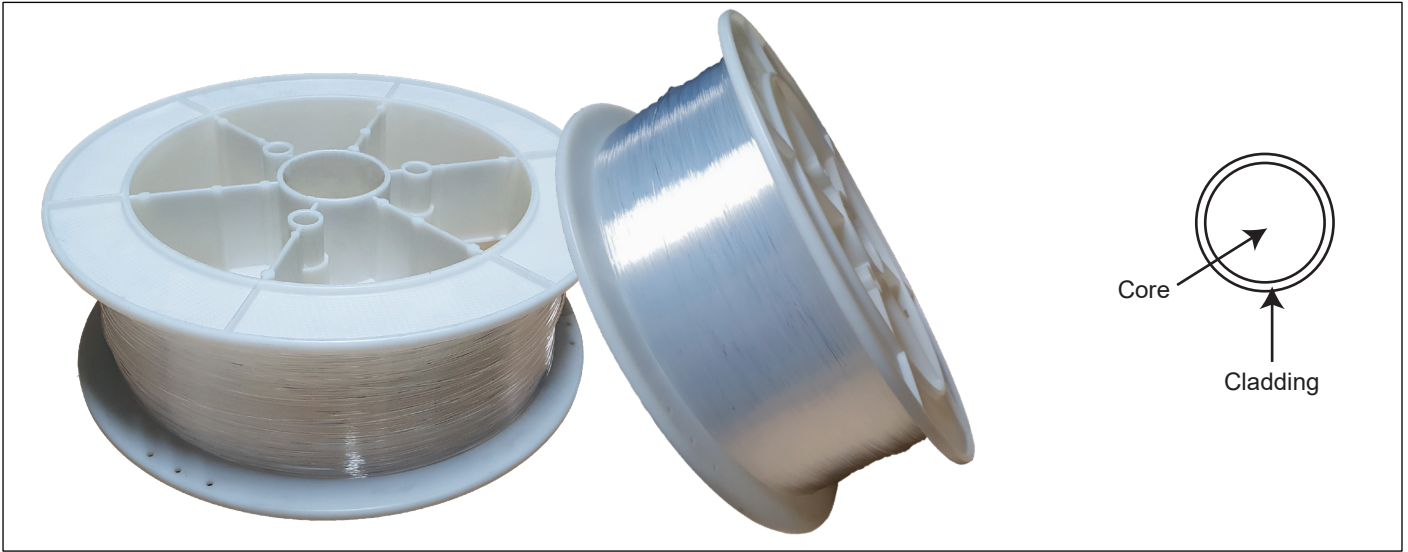


SERIES: FIBRE CABLE - BARE

PART NO. FOC-C-0.50SK



Core material	Polymethyl-Methacrylate resin		
Cladding material	Flurinated polymer		
Core refractive index	1.49		
Refractive index profile	Step index		
Numerical aperture	0.50		
	Min.	Typ.	Max.
Core diameter	455µm	485µm	515µm
Cladding diameter	470µm	500µm	530µm
Approximate weight	0.20 g/m		

		Acceptance criterion and/or test conditions	Min.	Typ.	Max.
Maximum rating	Storage & operation temperature	No deterioration in optical properties*	-55°C	-	+70°C
	Operation temperature	No deterioration in optical properties** (95%RH)	-55°C	-	+60°C
Optical properties	Transmission loss	650nm collimated light, standard condition, 10m-1m cutback	-	-	180dB/km
Mechanical characteristics	Minimum bend radius	Loss increment ≤0.50dB A quarter bend	10mm	-	-
	Tensile strength	Tensile force at yield point JIS C 6861	14N	-	-

All tests are carried out under temperature of 25°C unless otherwise specified.

\*Attenuation change shall be within +/- 10% after 1,000 hours

\*\*Attenuation change shall be within +/- 10% after 1,000 hours except that due to absorbed water.

**Packaging details:** Contact LightEFX sales

Single box -

Reel size -

Weight -

Volume -