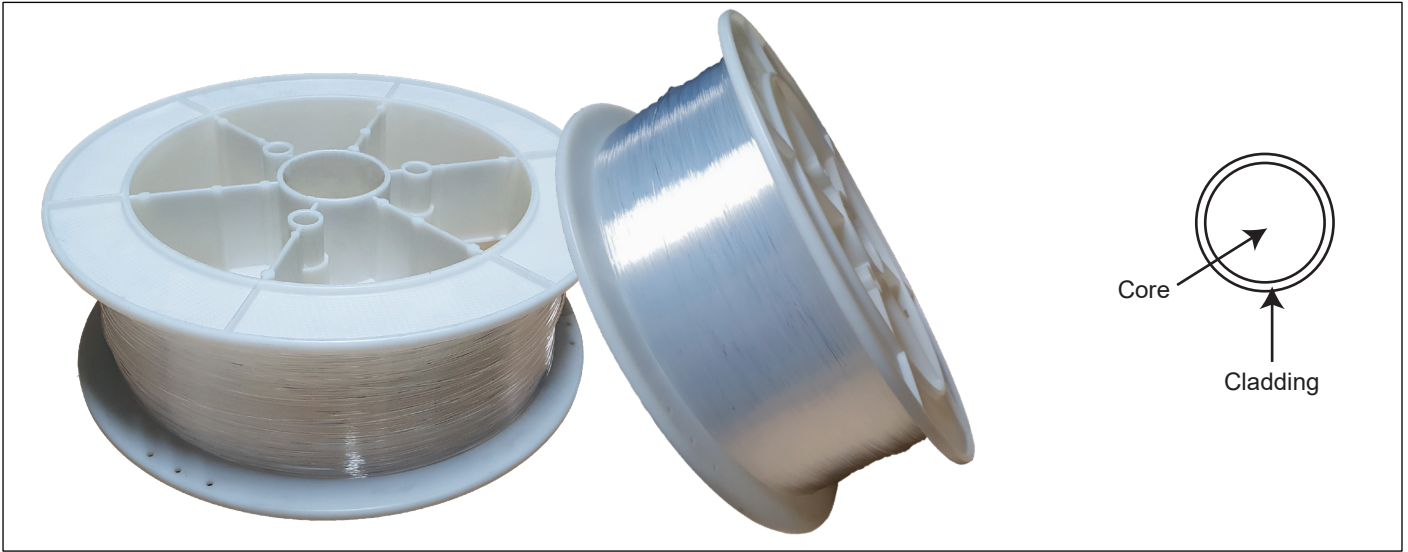


SERIES: FIBRE CABLE - BARE

PART NO. FOC-C-2.50



Core material	Polymethyl-Methacrylate resin		
Cladding material	Flurinated polymer		
Core refractive index	1.49		
Refractive index profile	Step index		
Numerical aperture	0.50		
	Min.	Typ.	Max.
Core diameter	2,300µm	2,450µm	2,600µm
Cladding diameter	2,350µm	2,500µm	2,650µm
Approximate weight	6.0 g/m		

		Acceptance criterion and/or test conditions	Min.	Typ.	Max.
Maximum rating	Storage temperature	No physical deterioration (in dry atmosphere)	-55°C	-	+70°C
	Operation temperature	No deterioration in optical properties*	-55°C	-	+70°C
		No deterioration in optical properties** (95%RH)	-	-	+60°C
Optical properties	Transmission loss	650nm collimated light, standard condition, 10m-1m cutback	-	-	200dB/km
Mechanical characteristics	Minimum bend radius	Loss increment ≤0.50dB A quarter bend	100mm	-	-
	Tensile strength	Tensile force at yield point JIS C 6861	400N	-	-

All tests are carried out under temperature of 25°C unless otherwise specified.

*Attenuation change shall be within +/- 10% after 1,000 hours

**Attenuation change shall be within +/- 10% after 1,000 hours except that due to absorbed water.

Packaging details:

Single box - 295Lx110Wx295H (mm)

Reel size: 250m

Weight - 9.00 kg

Volume - 0.01m³